

Thinking globally, acting locally:

***“IBERLIFE initiative
for the synergetic development of
LifeWatch ERIC between Portugal & Spain”***

Ph.D. Eng. Juan Miguel González-Aranda

Head of Unit Nanomaterials & e-Science, Deputy Directorate-General for Science & Innovation Internationalization.

Ministry of Economy, Industry and Competitiveness of Spain.

LifeWatch ERIC Chief Technology Officer-CTO



MINISTERIO
DE ECONOMÍA, INDUSTRIA
Y COMPETITIVIDAD

*Portuguese – Spanish Workshop on
Research and Education Networks and E-Science
May 7th-2018, Salamanca (Spain)*

CONTENTS

PART I. Introductory Context: An overall vision of LifeWatch ERIC distributed e-Infrastructure

- *In relation to a) Introduce the institution you represent, and explain its relation with e-Science.*

PART II. Facts rather than statements: LifeWatch ERIC construction PT-ES shared vision, approach and instruments

- *In relation to b) Explain your view on the current status of e-science in its country and at EU level, including proposals for the future and c) Share any specific past or ongoing experience of cooperation Spain-Portugal, if any, and point future opportunities for further cooperation between the two countries.*

PART III. Some conclusions



PART I

**Introductory Context:
Introductory Context: An overall
vision of LifeWatch ERIC
distributed e-Infrastructure**

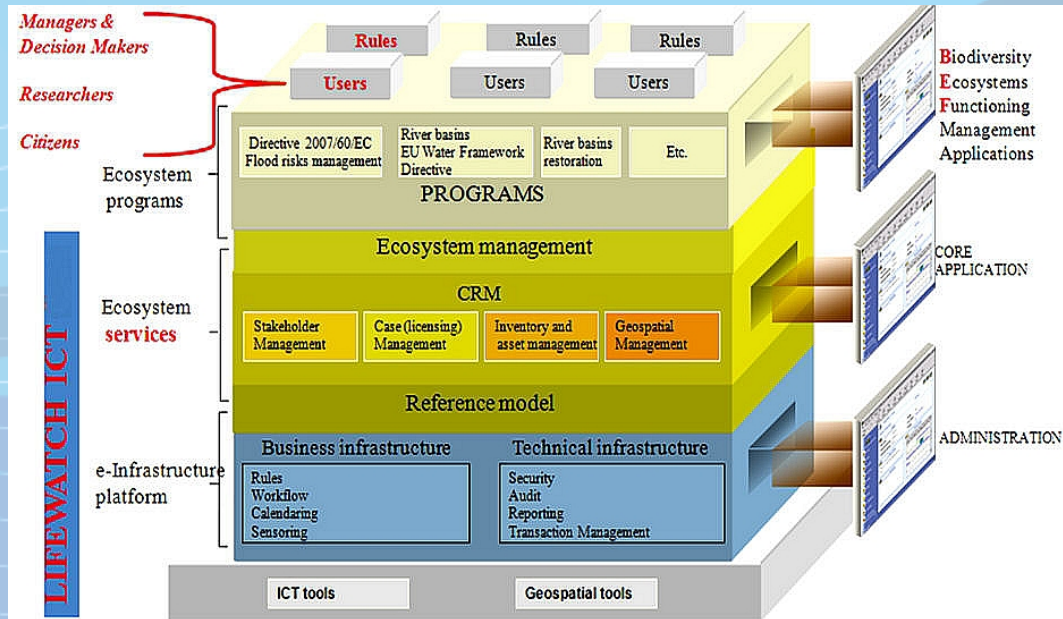


LifeWatch ERIC is a European e-Science distributed Infrastructure focused on how to measure the impact of **Global Climate Change** issues on Earth **Biodiversity and Ecosystem Research**.

Expected IMPACT: LifeWatch ERIC as a structuring tool for the **European Research Area**, also supporting **policy decision making** addressing Societal Challenges which demand scientific knowledge in a Global Climate Change context, including **Citizen Science** activities.



This **mission** is achieved by providing access to a multitude of data sets, services and tools enabling the construction and operation of **Virtual Research Environments** which provide the environments for integrating data, software and computation as developed in pan European infrastructure cooperation.



STRATEGY REPORT
ON RESEARCH
INFRASTRUCTURES



ROADMAP 2016



ESFRI Projects & Landmarks 2016 recently published by European Commission.

LifeWatch ERIC considered as an ENVIRONMENT strategic one.

www.lifewatch.eu

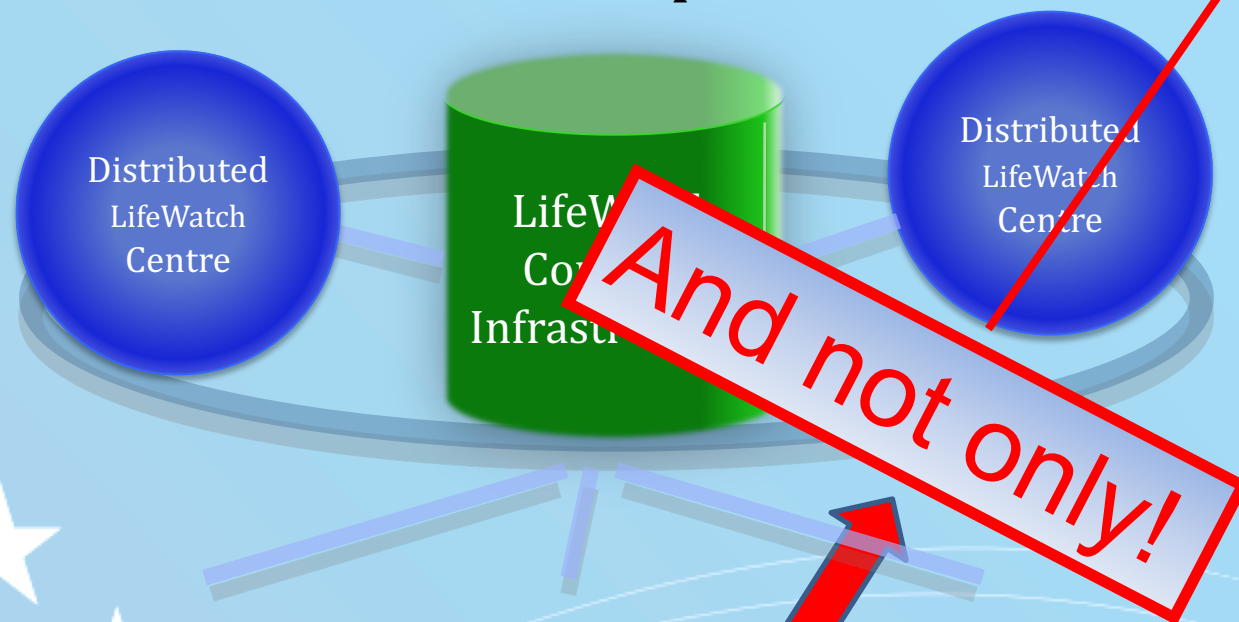
[Related Projects](#) [Site Map](#)



Congratulations to @ll LifeWatch Community !

Since March 2017 LifeWatch is considered (the 14th) ERIC. Its 1st and 2nd General Assemblies took place on May 8th-9th , 2017 and January 10th, 2018 in Seville, respectively. In the same city, on May 23rd ,DG R&I Robert Jan-Smits awarded the LifeWatch ERIC “Plate” in a ceremony also held in Seville (Spain).

LifeWatch is cooperating with “**distributed**” Centres in cooperating countries (including their REGIONS). These Centres are developing and operating virtual and physical media and other components.



TYPE: distributed
COORDINATING COUNTRY: ES
MEMBER COUNTRIES: BE, EL, ES, IT, NL, PT, RO *
* March 7th, 2016 update
PARTICIPATING COUNTRIES: FI, FR, HU, NO, SE, SI, SK

TIMELINE

- ESFRI Roadmap entry: 2006
- Preparation phase: 2008-2011
- Construction phase: 2011-2016
- Operation start: 2016

ESTIMATED COSTS

- Capital value: 66 M€
- Operation: 10 M€/year

HEADQUARTERS
 Statutory Seat: Seville (ES)
 Common facilities: ES-IT-NL

WEBSITE
<http://www.lifewatch.eu>

Virtual Labs
 (Amsterdam, The Netherlands)

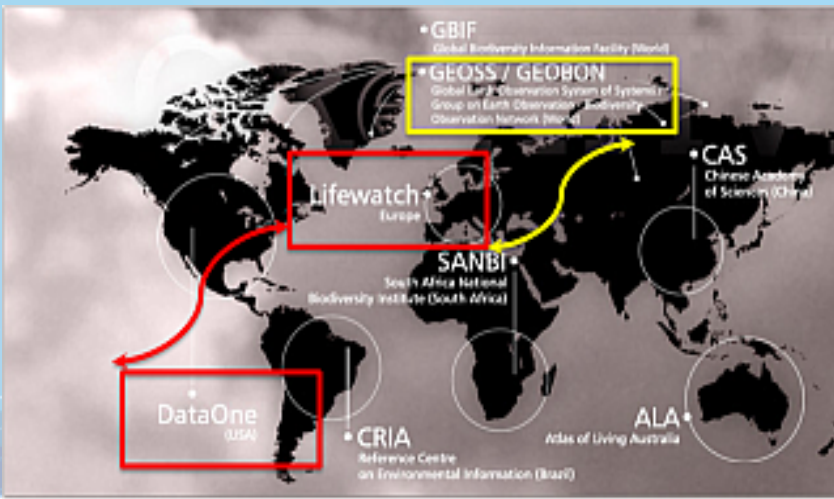
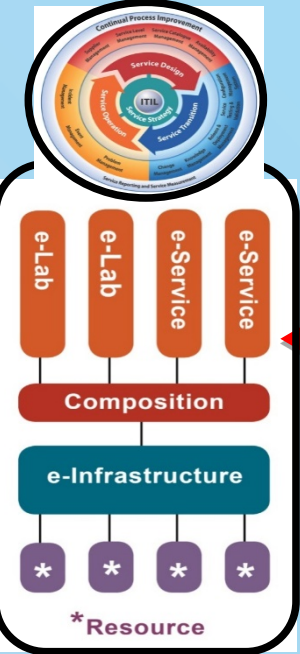


Service Centre
 (Lecce-Region Puglia, Italy)



Headquarters, Statutory Seat & ICT e-Infrastructure Offices
 (Andalusia, Spain)





And not only!

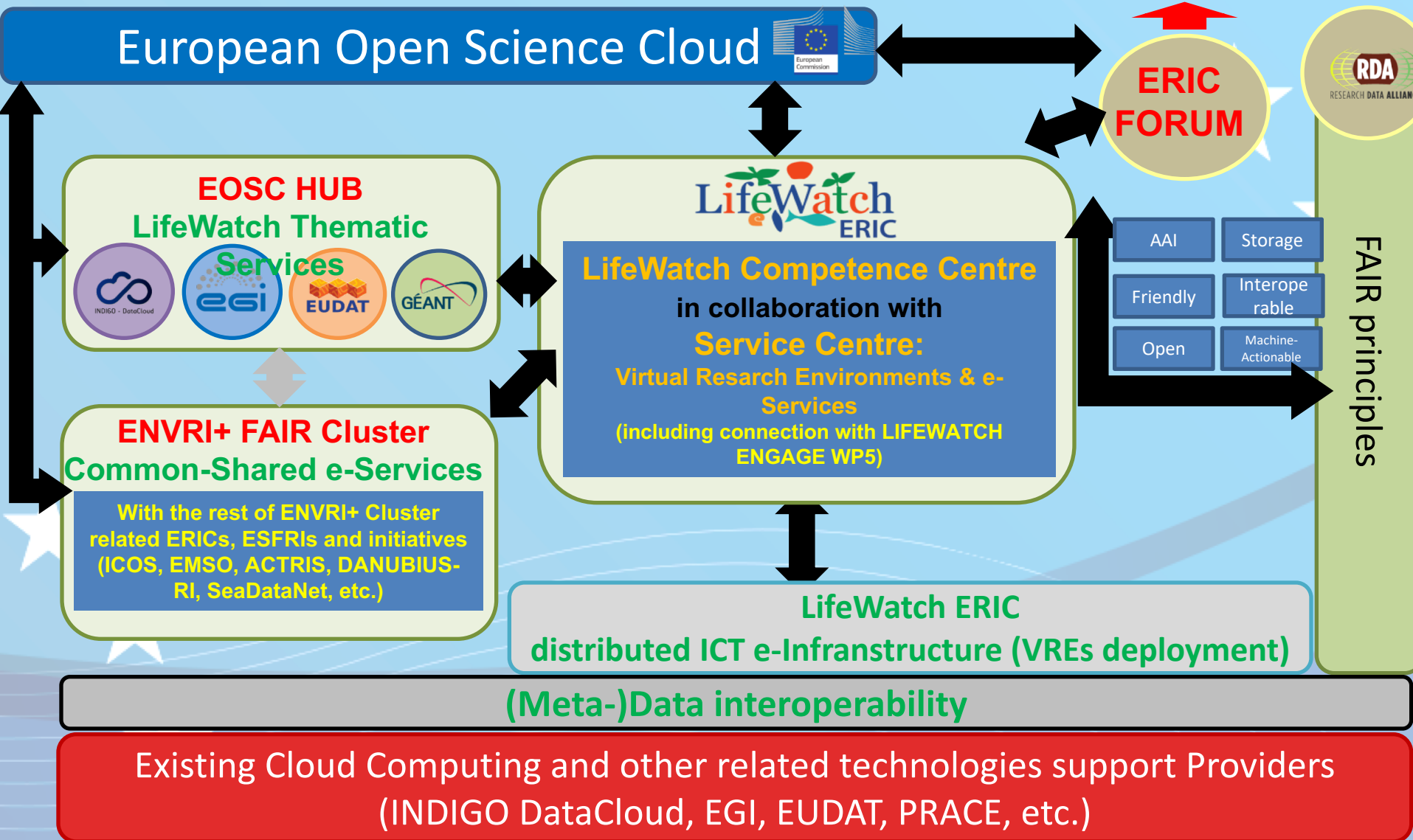


European Open Science Cloud

All together...

Task 6.2: ERICs technical & innovation multi-scale integration (Task Lead **LIFEWATCH**)
Due to the importance of the integration of ERICs at different regional, national and pan-European scales being based on their distributed nature, two specific topics will be covered in this task and will result in reports to be presented during the ERIC FORUM seminars:

- Integration of ERIC development into pan-European e-Infrastructures, particularly in the new European Open Science Cloud-EOSC
- Creating synergies between ERICs and the (Regional) Research and Innovation Strategies for Smart Specialisation-RIS³





PART II

**Facts rather than statements:
LifeWatch ERIC construction PT-ES
shared vision, approach and instruments**

PORTUGAL: PORBIOTA & IBERLIFE

National RI Roadmap

PORBIOTA

- 1 Consortium of Portuguese institutions lead by InBio (Associate laboratory)
- 2 Academic institutions (universities, research centers)
- 3 Governmental institutions
- 4 Together they hold most of the data on Portuguese biodiversity
- 5 Strong links with the private sector/sustainability

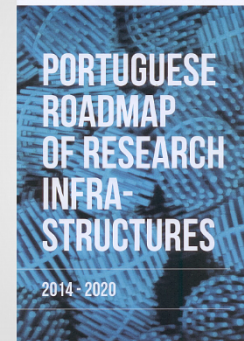
General aims

- 1 Distributed e-infrastructure to manage biodiversity data and meta-data from multiple sources (data providers)
- 1 PORBIOTA is now on the Portuguese Roadmap for Science
- 2 Fostering clusters: the Iberlife initiative (Spain + Portugal)

PORBIOTA R&D Institutions



PORBIOTA Consortium Partners



PORBIOTA

One of the 40 RI include in the national roadmap, presented in December 2014



PORBIOTA integrates LifeWatch ERIC Portugal initiative
IBERLIFE = Iberian (ES-PT) LifeWatch ERIC initiative
IBERLIFE action!

1st IBER held in IBERGF (Aveiro, followed bilatera meeting



IberLIFE

LIFEWATCH SPAIN Community is structured by its Joint Research Unit (acronym **JRU LW.ES**)

Composed of **30 Organizations & Institutions** (May 2018)

GOVERNANCE SCHEME

MINECO (SGCTI-SGRIE), MAGRAMA(CHG), JUNTA ANDALUCÍA (Consejerías: CEICE y CMYOT)

(En base a Convenio Nodo Apoyo LW España)

COMITÉ DIRECTIVO (CD)

Director Técnico LW.ES

Oficina Técnica
Coordinación y
Proyectos (Madrid y
Andalucía)

COMITÉ EJECUTIVO y SEGUIMIENTO (CES)

GRUPOS DE TRABAJO de APOYO LW.ES

GRUPO TRABAJO GOBERNANZA

Coord. IAT-UAH (**Institut Benjamin Franklin**)^{*}

Aspectos Técnico-Jurídicos:
CEI CAMBIO-UPO
CEI ANDALUCIA TECH-US
CHG-MAGRAMA
AAC-CEICE-Junta Andalucía

- Tramitación ERIC
- Reglamentos internos
- Propiedad intelectual
- Licitación para Directivos
- Transferencia Tecnológica

GRUPO TRABAJO Nodo Científico LW.ES

Coord. Director Técnico LW.ES en colaboración Comités Asesores

Redes: GBIF.ES, LTER.ES, CETAFy RDA, entre otras
MAGRAMA: Inventario Nacional de Biodiversidad, Fundación Biodiversidad, MINECO: Plan Estatal I+D+i JUNTA ANDALUCÍA: REDIAM

A través de estas Redes se contactarán a las Organizaciones y Centros de Investigación: P.ej., ICTS marinas y terrestres, etc.

GRUPO TRABAJO e-Infraestructura TIC

Coord. SGRIE-MINECO en colaboración RES/NGI.ES-IBERGRID (IFCA), CITIC/REDIAM

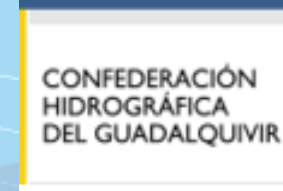
Construcción y mantenimiento operacional de la e-Infraestructura distribuida LW.ES

Conexión con la parte internacional a través del ICT Core Construction Committee
(IC)³

Comité CIENTÍFICO Asesor

Comité TÉCNICO Asesor

Agrupación de Interés Empresarial para TIC de carácter público y privado: En base acuerdo Marco IAT-CITIC;
FundeCyt-GOBEX (CETA-CIEMAT);
CEUS-INTA



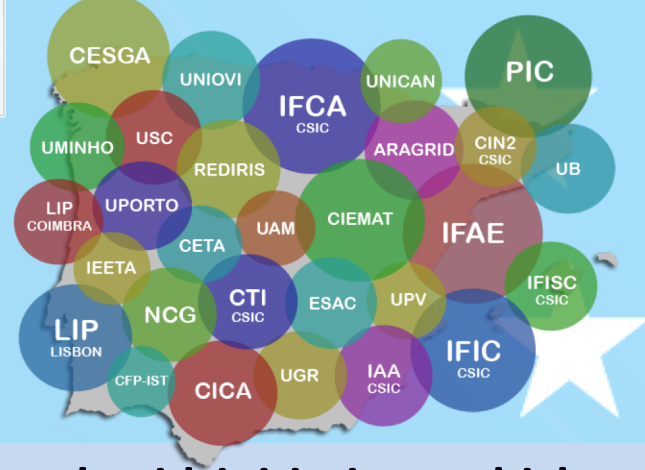
...among others



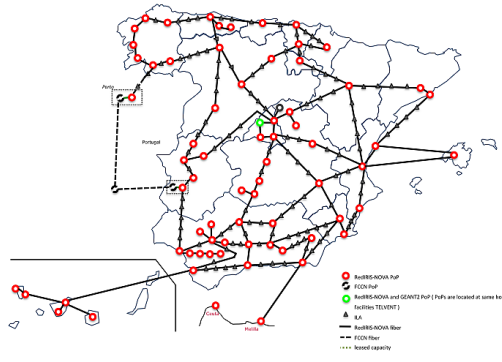


IBERIAN GRID INFRASTRUCTURE

Federating computing and data resources across the Iberian area



Federation of the **Spanish** and **Portuguese** national grid initiatives which provides core services to IBERLIFE initiative and in turn to the EOSC through LifeWatch ERIC.



Guaranteeing **Portuguese** and **Spanish** connectivity, and in turn with the rest of EU and international (Latin America and Caribbean, etc.).



Guaranteeing Supercomputing & HPC in tightly collaboration with **Portuguese** colleagues such as LIP, among others.

RED ESPAÑOLA DE SUPERCOMPUTACIÓN

RIS³ and ESIF related initiatives

○ Individual countries commit to participate in ESFRI (including ERIC) following specific strategies, which usually are also based on **regional interests**. There is a clear interest and involvement of **regional authorities** in each country, which demand to be part of this process. Not-surprisingly, **several regions of Eastern & Southern Europe have included the construction or the upgrade of RIs in their Regional Strategies for Smart Specialization (RIS³) with the aim to mobilize the Structural Funds allocated to them:**

✓ That is the case of the 3 European regions which will focus our case study: **Andalusia-ES; CCDR-N Porto Norte-PT; and Regione Puglia-IT**

The image displays a collection of logos and branding for RIS³ initiatives and related programs:

- RIS³ ANDALUCIA**: Estrategia de Innovación de Andalucía 2014-2020. Logo with the text "Andalucía se mueve con Europa".
- NORTE 2020**: Smart Specialisation Strategy. Priority Domains. Includes the URL ccdr-n.pt/norte2020 and ccdr-n.pt/norte2020.
- GOBIERNO DE ESPAÑA**: MINISTERIO DE ECONOMIA Y COMPETITIVIDAD.
- UNIÓN EUROPEA**: Fondo Europeo de Desarrollo Regional. Slogan: "Una manera de hacer Europa".
- Strategia di Specializzazione Intelligente**: SMART SPECIALIZATION STRATEGY REGIONE PUGLIA.
- PROGRAMA COOPERACIÓN TRANSFRONTERIZA ESPAÑA ~ PORTUGAL**: Interreg Sudoe. Includes the European Union logo.
- CCDRN**: Comissão Regional do Norte.
- GOVERNO DE PORTUGAL**.
- SECRETARIE DE ESTADO ADJUNTO DA ECONOMIA E EMPREGAMENTO REGIONAL**.
- ON.2**: O NOVO NORTE.
- QR**: QUADRO DE REFERENCIA ESTRATÉGICA REGIONAL.
- UNIÃO EUROPEIA**: Fundo Europeu de Desenvolvimento Regional.

Workshop on the use of Structural Funds for the construction of distributed e-Infrastructures supporting ENVironment initiatives

May 12th, 2014

EU Commission - DG CONNECT

Avenue de Beaulieu 25, (room S1), 1160 Brussels

This interest was reflected in the attendance to this workshop, over 80 persons from 15 countries and over 20 regions



<http://www.rich2020.eu/symposium2016>

Madrid, April 2016

RICH Symposium on Funding Instruments for developing Research Infrastructures

ATAS Proceedings

2014 JULY 10-11
UNIVERSITY OF EVORA

20th APDR CONGRESS

RENAISSANCE OF THE REGIONS OF SOUTHERN EUROPE

ISBN 978-989-8780-01-0

Italy, Portugal & Spain
regional cooperation
results

MAKING A JOINT USE OF EU-FUNDS: OPPORTUNITIES AND CHALLENGES ASSOCIATED TO EUROPEAN RESEARCH INFRASTRUCTURES


Juan Miguel González-Aranda^{1*}, Benjamín Sánchez Gimeno¹, Fernando Ballester¹, Ricardo Migueis², Alberto Basset³, Daniel Escacena Ortega⁴

¹ Ministry of Economy and Competitiveness, C/ Albacete 5 28027-Madrid, Spain, juanmiguel.gonzalez@mineco.es

² Fundação para a Ciência e a Tecnologia-Ministry of Education and Science, Av. D. Carlos I 126 1249-074 Lisboa, Portugal, ricardo.migueis@fct.pt

³ University of Salento, Vía per Monteroni 73100-Lecce, Italy, alberto.basset@unisalento.it

⁴ Andalusian Knowledge Agency-Regional Government of Andalusia, C/ Max Planck 3 Edificio Iris 1 Isla de la Cartuja 42092-Sevilla, Spain, daniel.escacena@juntadeandalucia.es



PART III
Some conclusions

- ✓ **LifeWatch ERIC is a particularly relevant case of ENVironmental RI from the Iberian (either at national or regional) perspective:**
 - As it is a distributed e-Infrastructure, some regions are aware of its potential for:
 - ✓ Capitalizing already existing investments
 - ✓ Improving ICT developments that may be useful for biodiversity research and for other purposes
 - ✓ Special attention must be placed to the expected impact in the regional industrial sectors
- ✓ **As a result, the existing knowledge and services related with biodiversity and environmental information from cooperating initiatives among territories should be better connected. This a real challenge for Environmental RIs which also includes specific topics such as shared ICT developments, Intellectual Property Rights (IPR), Open Access (RDA) and **European Open Science Cloud (EOSC) connections**. All of these items demand the involvement of the interested regions.**
- ✓ **In that sense, ongoing initiatives such as IBERLIFE (based on the LifeWatch Competence Center-IBERGRID) and common Biodiversity and Ecosystem Resesarch & Management programmes established at Mediterranean, Atlantic, Latin America-Caribbean and African context, provide a common ground to reinforce the development of PT-ES shared distributed e-Infrastructures. In fact, it is already considered as an example of good practices to integrate physical and virtual media through the LifeWatch ERIC.**

...BUT:

- ✓ The implementation of distributed Environmental RIs would be at serious risk if regional Smart Specialization Strategies (RIS³) policies are not taken into account during their construction phase. Their consideration would prevent H2020 funding instruments from being simple extensions of Preparatory Phase projects, enabling “realistic” constructions and granting the sustainable operation of new-born facilities. This a crucial issue as normally Preparatory Phases are usually conceptual-based exercises and they do not take into consideration the actual commitments of the countries (including their regions). New “drivers/catalysts” should be appointed in order to integrate all the pieces of this complex jigsaw puzzle.
- ✓ To that purpose, LifeWatch ERIC has developed a “realistic” **Construction and associated Business Plan** based on “real” needs and users’ requirements, including a “feasible” **Governance Scheme and Funding Strategy** in order to guarantee LifeWatch ERIC **Sustainability** based on an early identification of “in-kind” and “in-cash” Member States (including their Regions-RIS³) contributions; consisting of at least a 5-years period “Cash Flow” Analysis. It follows a sequence of releases, starting with a down-scaled level and a **incremental & iterative construction methodology** (“Agile”-based) with a proper Quality Assurance & Risk Management Plan associated, *in tightly collaboration with the European Open Science Cloud-EOSC plans, and thus, **IBERLIFE initiative is important in this regard.***

